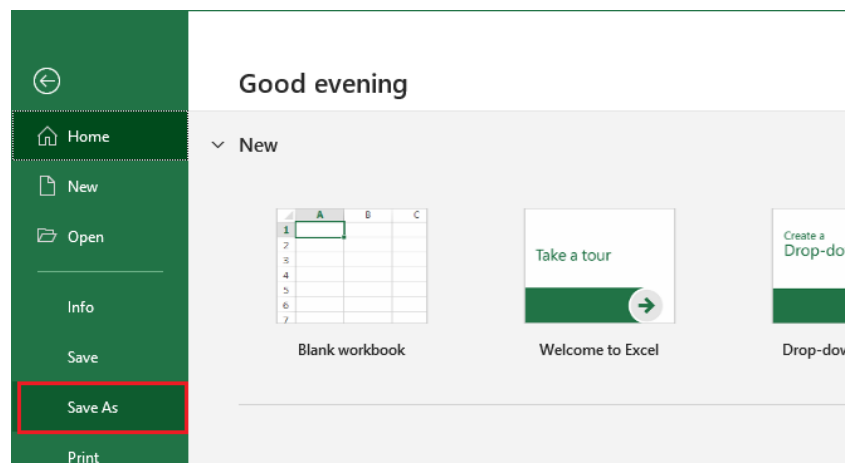
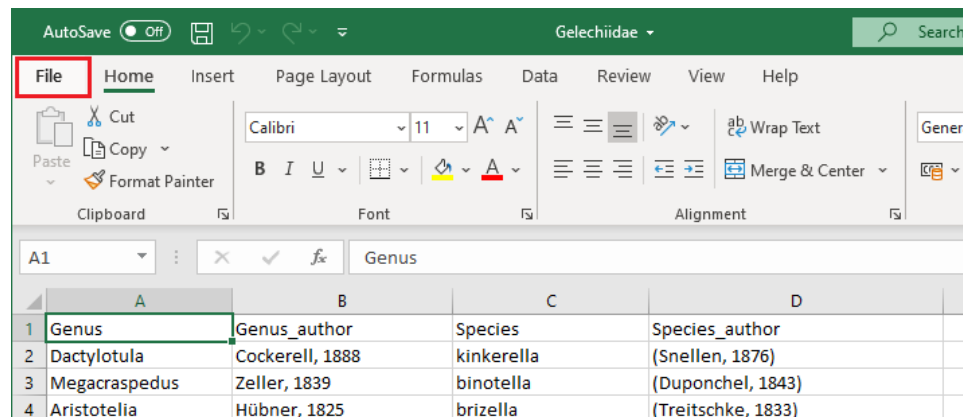


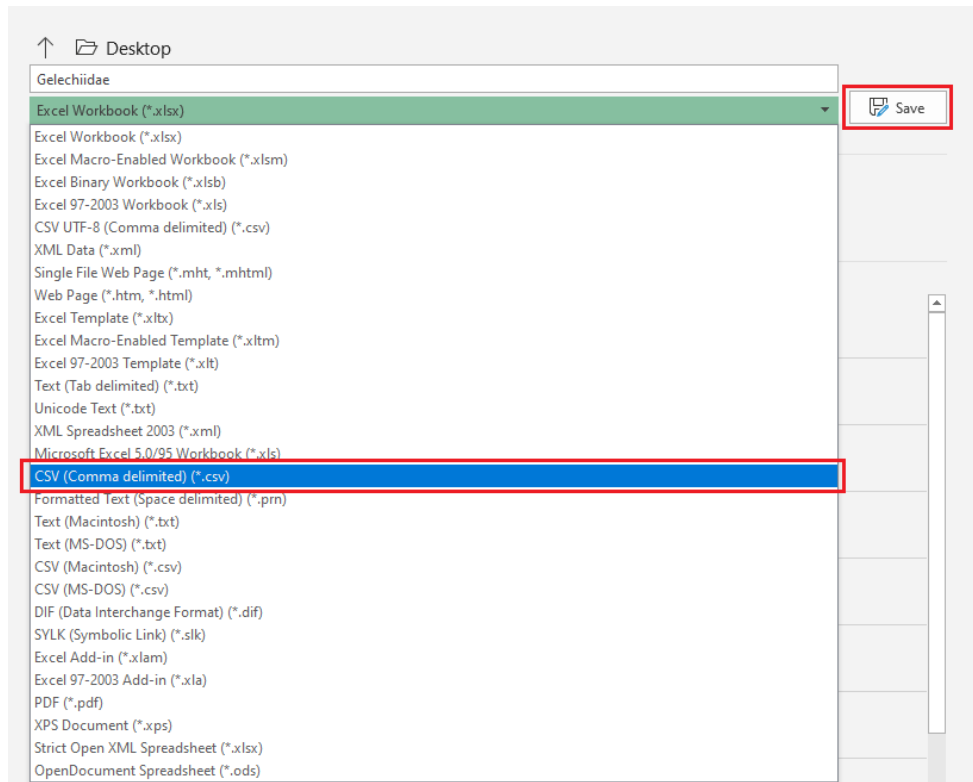


## How to Create Unit Tray Labels

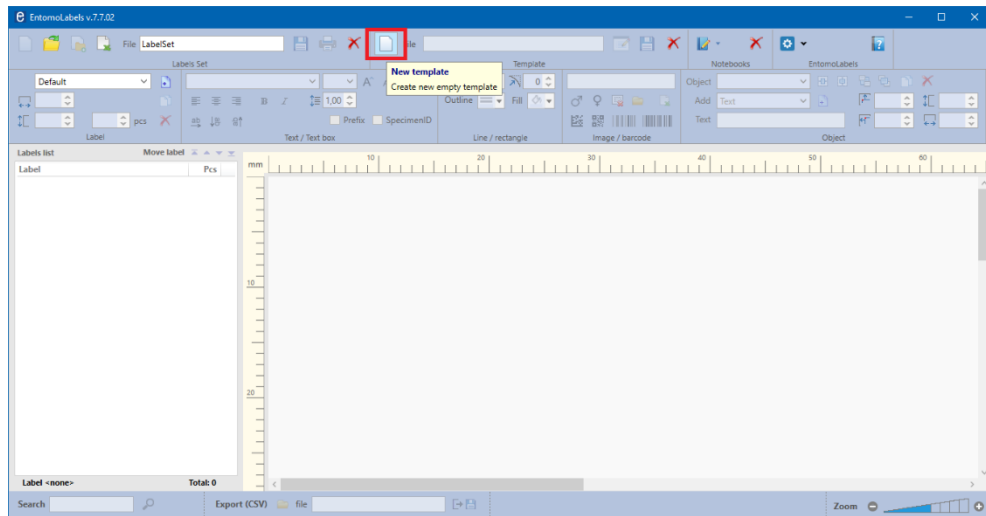
1. Prepare a list of species in MS Excel and then save the file as CSV.  
The first row must contain column names!

	A	B	C	D	E
1	Genus	Genus_author	Species	Species_author	
2	Dactylotula	Cockerell, 1888	kinkerella	(Snellen, 1876)	
3	Megacraspedus	Zeller, 1839	binotella	(Duponchel, 1843)	
4	Aristotelia	Hübner, 1825	brizella	(Treitschke, 1833)	
5	Aristotelia	Hübner, 1825	ericinella	(Zeller, 1839)	
6	Aristotelia	Hübner, 1825	subdecurtella	(Stainton, 1859)	
7	Aristotelia	Hübner, 1825	subericinella	(Duponchel, 1843)	
8	Chrysoesthia	Hübner, 1825	drurella	(Fabricius, 1775)	
9	Chrysoesthia	Hübner, 1825	sexguttella	(Thunberg, 1794)	
10	Xystophora	Wocke, 1876	carchariella	(Zeller, 1839)	
11	Xystophora	Wocke, 1876	pulveratella	(Herrich-Schäffer, 1854)	
12	Atremaea	Staudinger, 1871	lonchoptera	Staudinger, 1871	
13	Isophrictis	Meyrick, 1917	anthemidella	(Wocke, 1871)	
14	Isophrictis	Meyrick, 1917	striatella	(Denis & Schiffermüller, 1775)	
15	Metzneria	Zeller, 1839	aestivella	(Zeller, 1839)	
16	Metzneria	Zeller, 1839	aprilella	(Herrich-Schäffer, 1854)	

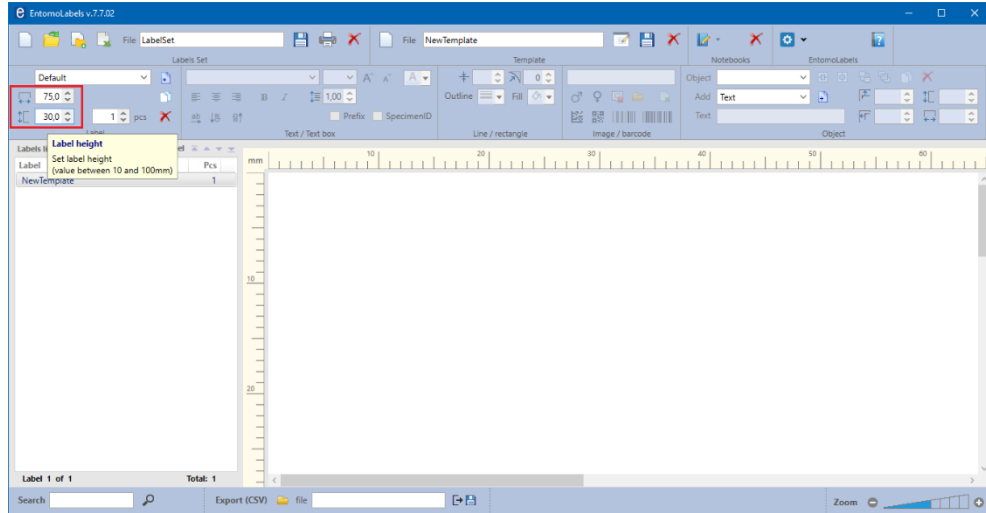




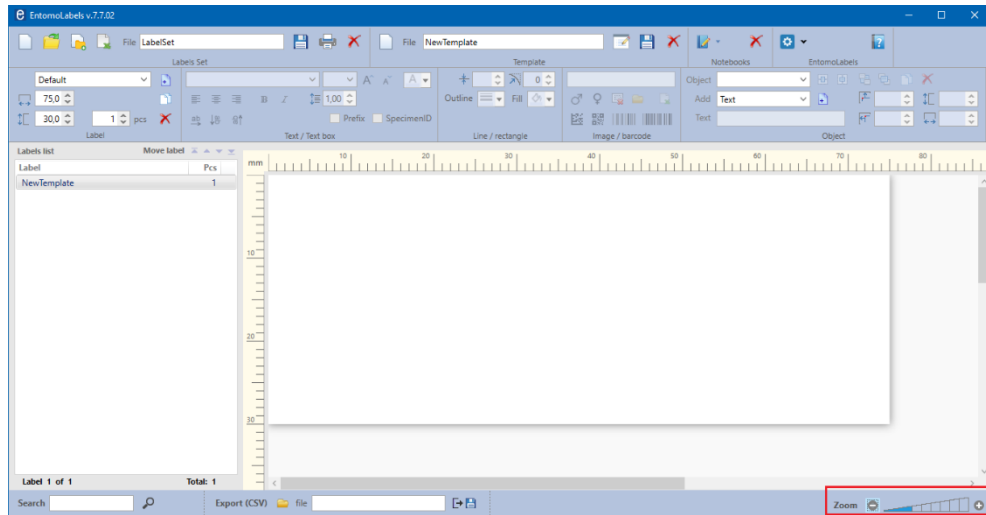
2. Run EntomoLabels and create a label template if you don't already have one. Here's an example you can follow:



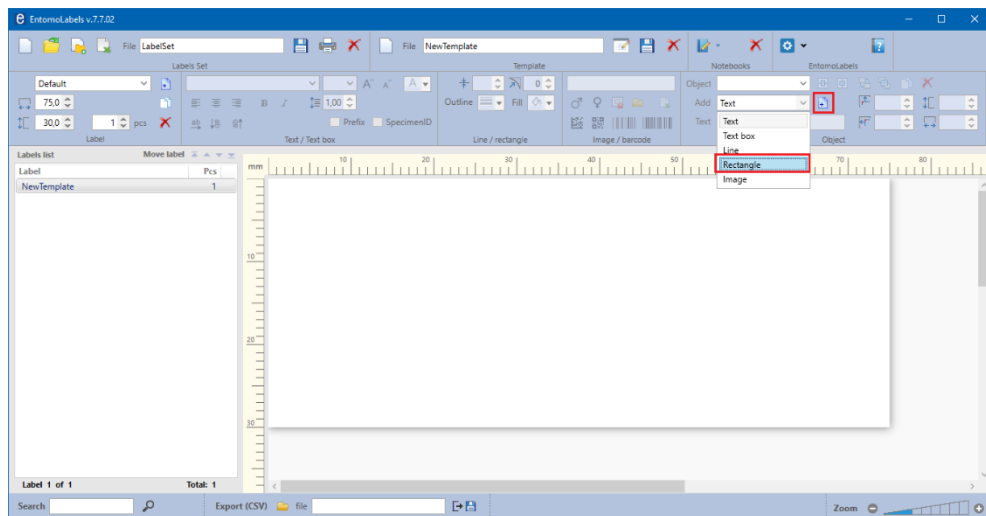
Set template width and height to fit your unit trays

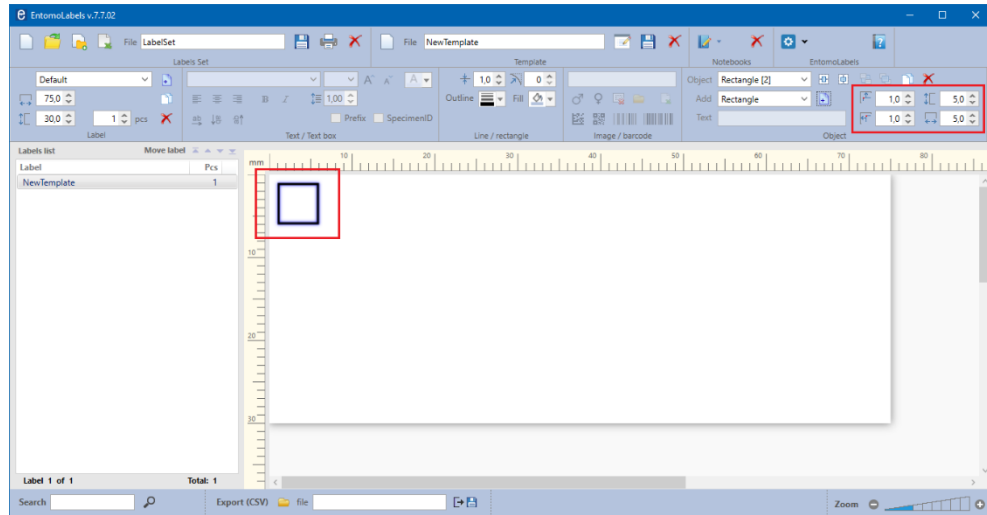


Adjust zoom to see the whole template in your work area

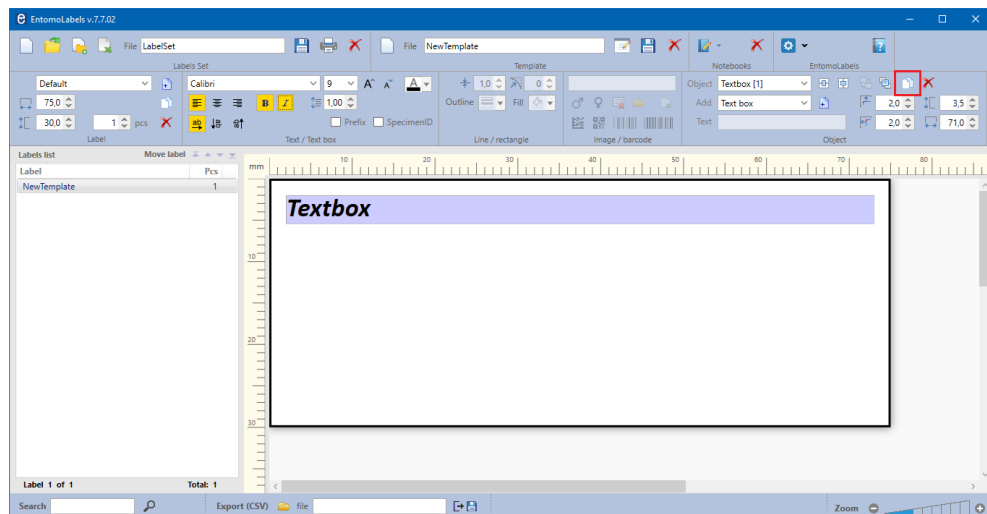
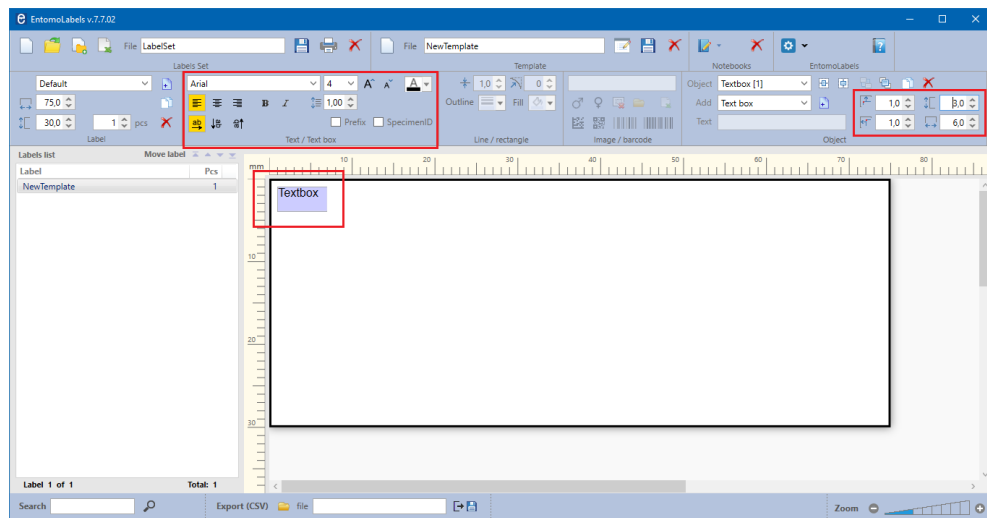


Add a rectangle and set its size and position

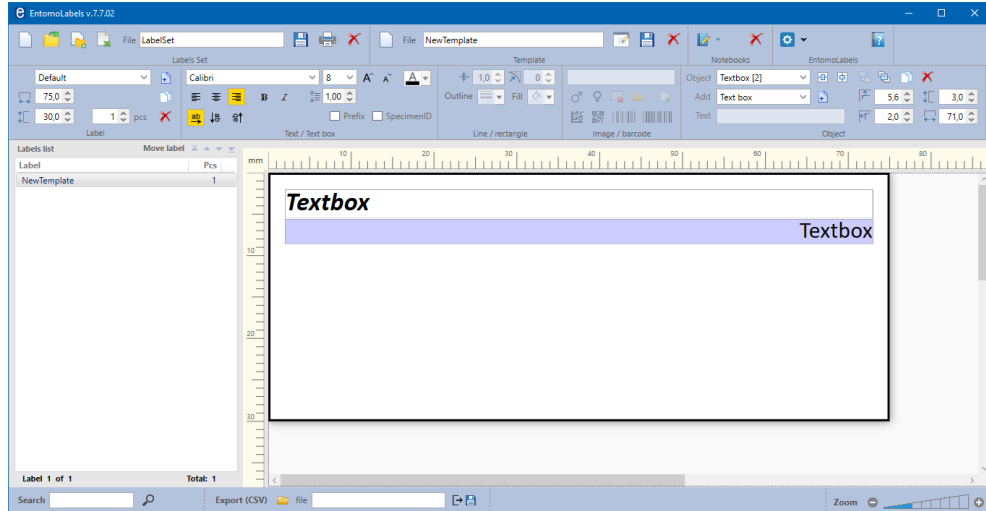




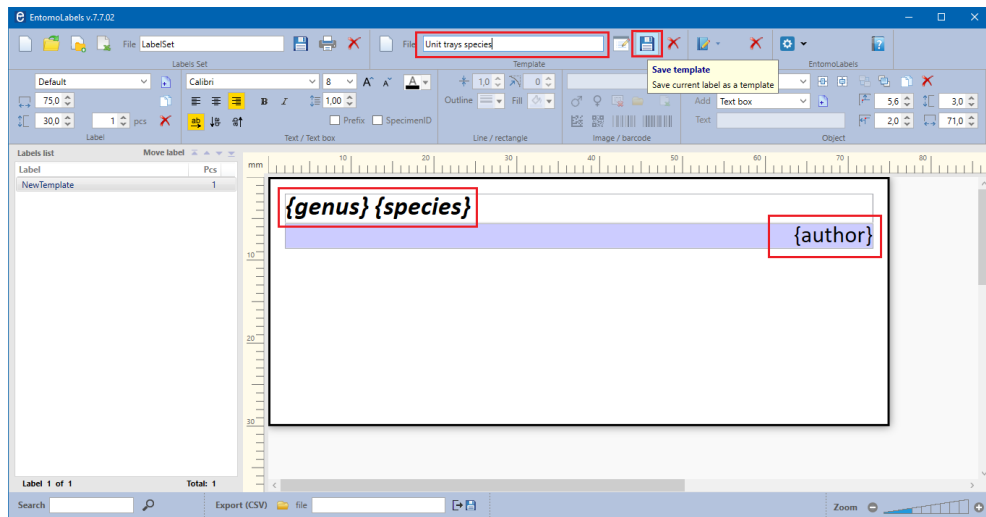
Insert Textbox object (for Genus and species) and set its parameters to fit your



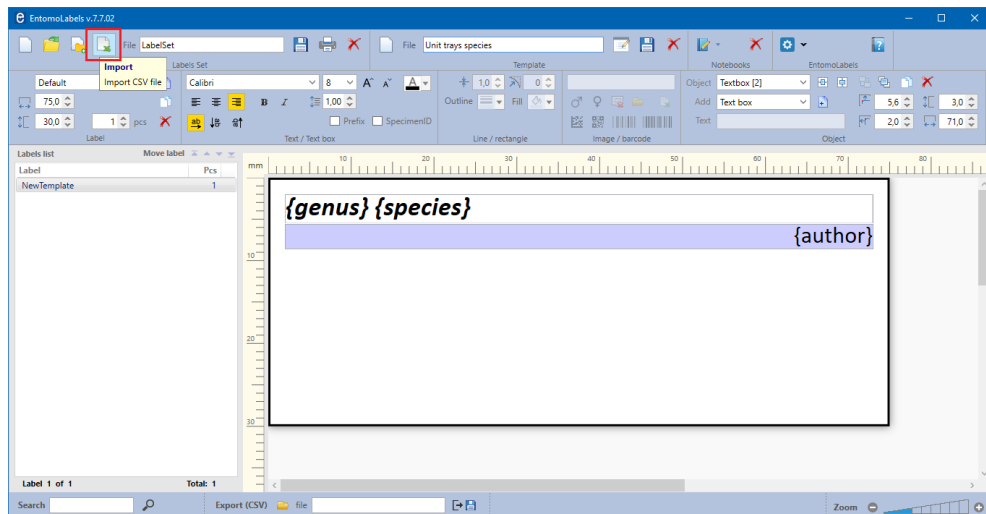
Insert another Textbox object or duplicate it and set its parameters



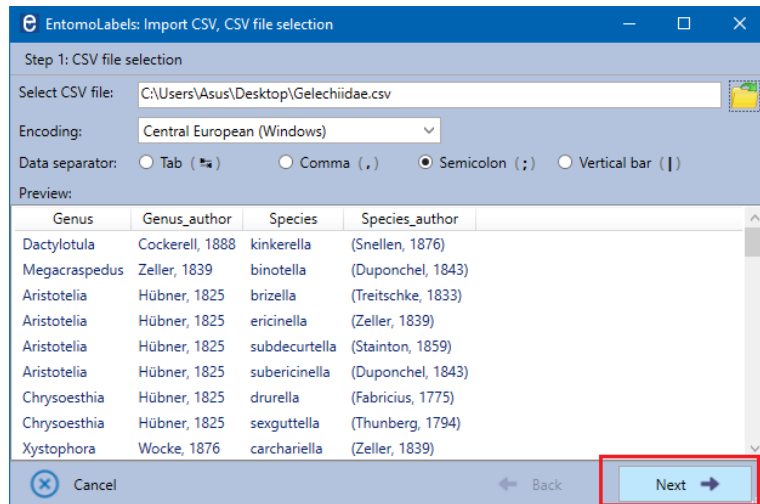
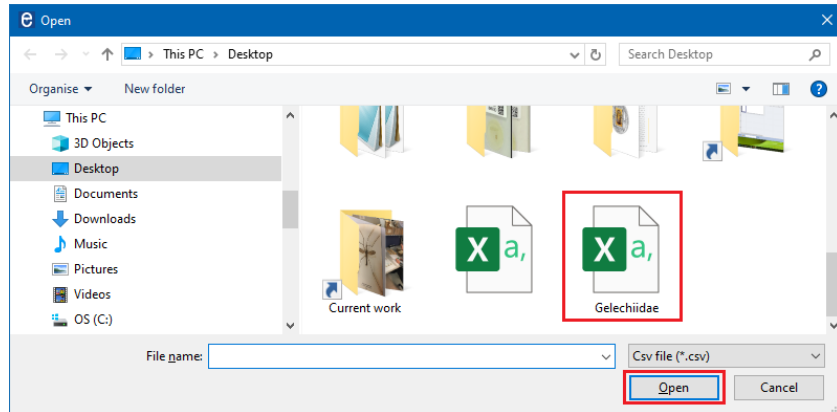
Insert import tags and save the template.



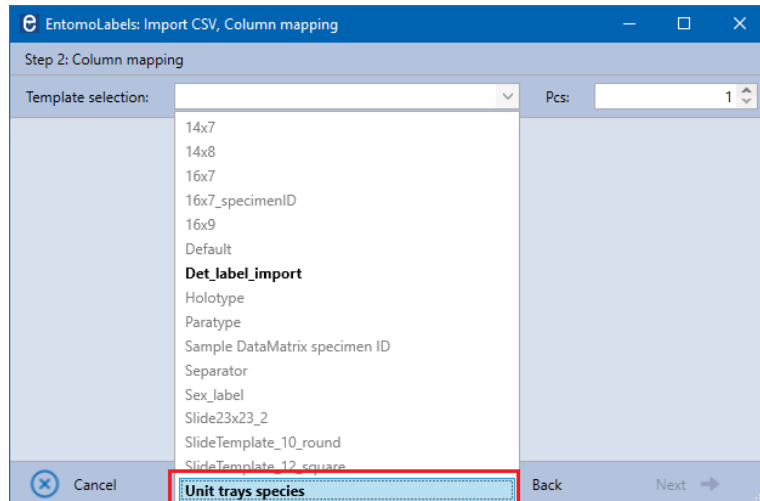
3. With your data set created and your label template finished, you can import from CSV. Here are the steps:



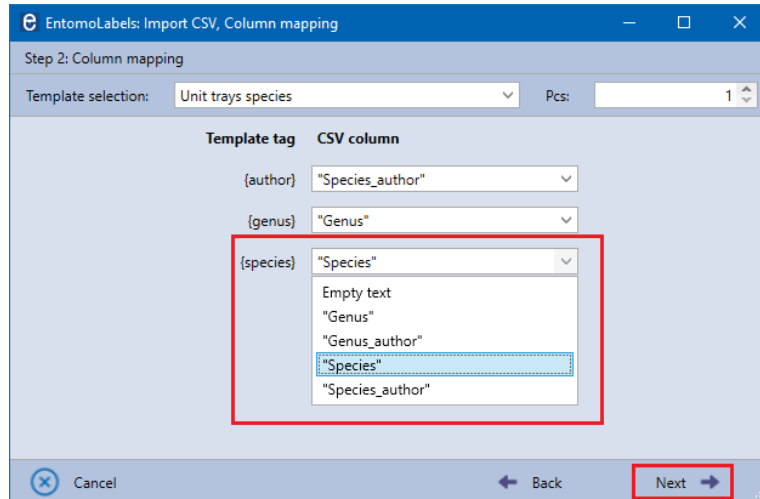
Select the CSV file you prepared earlier



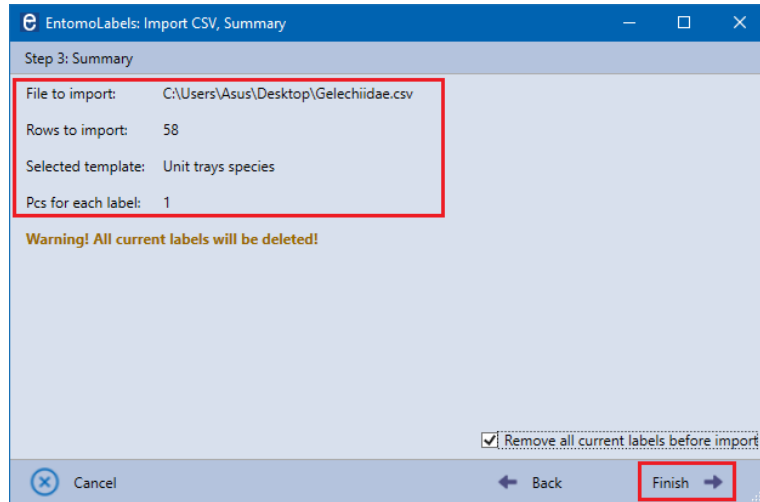
Select your new template



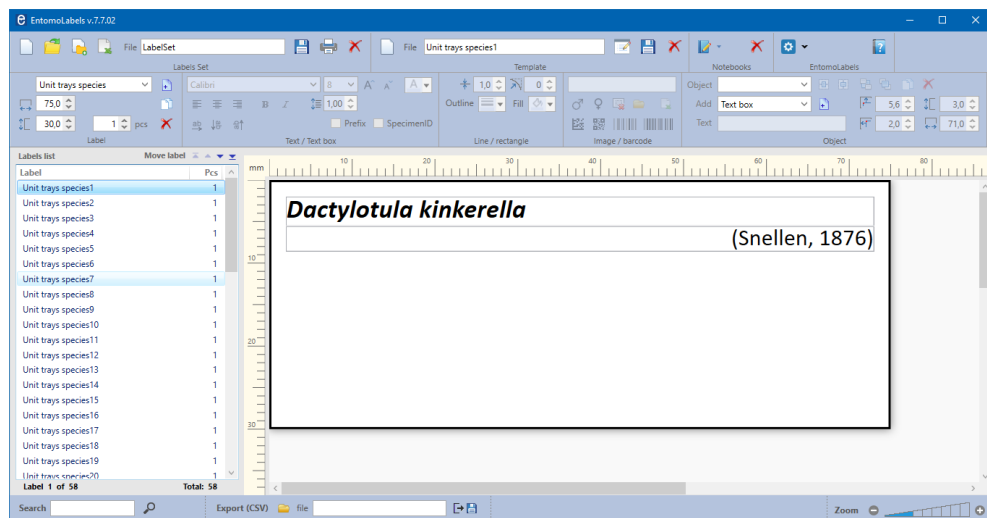
Now map tags to the CSV columns and click [Next]

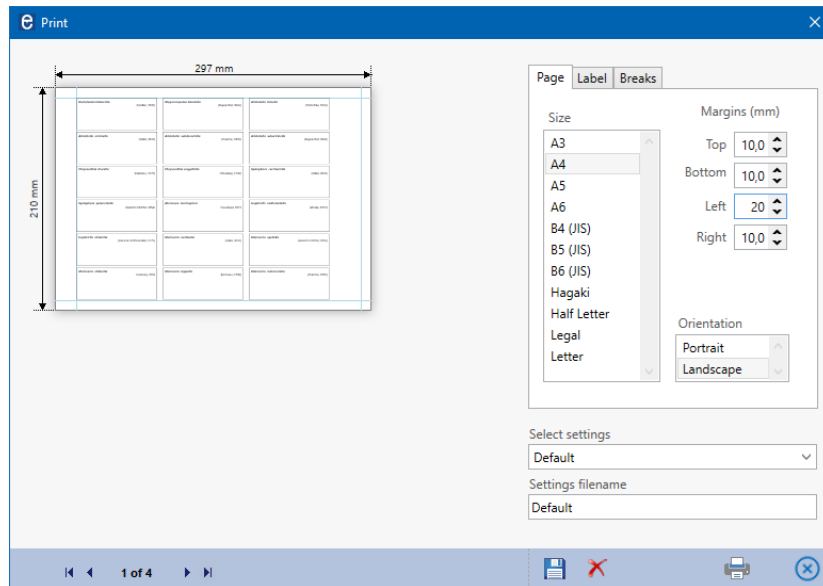


Click [Finish]

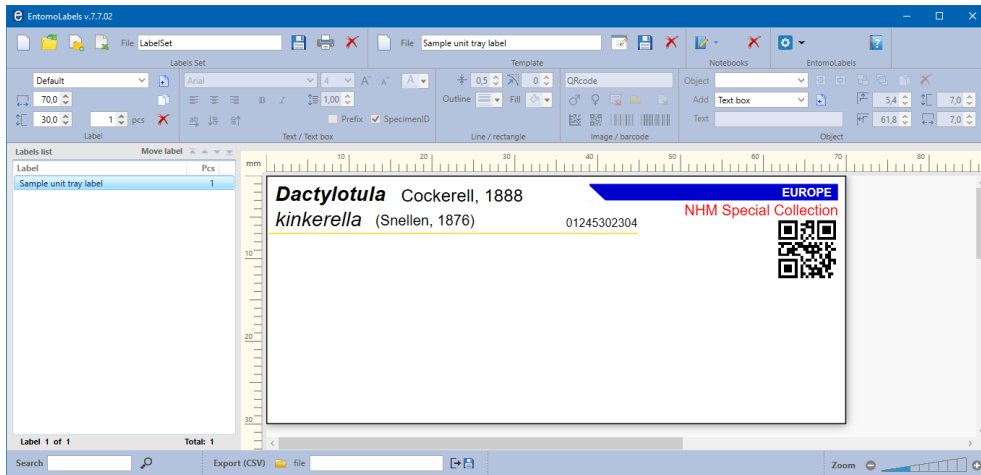


4. Now that the data has been imported, you can print the new tray tags:





You can design templates using any of the EntomoLabels objects, adapting them to your needs.



Sample unit trays with labels

